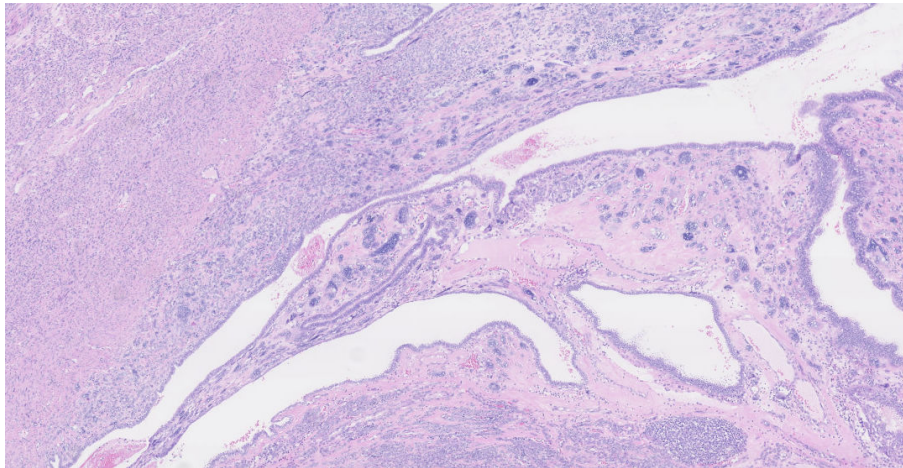


**Can one still be a general surgical pathologist?**  
**An interactive slide seminar based on 24 cases illustrating pitfalls**



- Speaker:** Thomas Krausz, MD, FRCPath, Director of Anatomic and Surgical Pathology, Vice Chair of Pathology University of Chicago, USA
- Dato:** 26.- 27. oktober 2018
- Sted:** IDA Mødecenter,  
Kalvebod Brygge 31, 1560 København
- Pris:** YL i uddannelsesstilling 1200 kr., Speciallæger 1800 kr.
- Tilmelding:** Email til [mabn@regionh.dk](mailto:mabn@regionh.dk). Tilmeldingsfrist d. 12. oktober 2018.
- Betaling:** Danske Bank, reg.nr. 1551, konto nr. 0005126126 senest d. 12. oktober 2018. Bemærk: Det er desværre ikke muligt at betale via EAN.
- Afmelding:** Senest d. 12. oktober 2018. Ved senere afmelding bortfalder retten til refusion.

## **Program:**

### Friday 26th October 2018

- 10.30-11.00 Coffee and registration
- 11.00-12.30 Part I, presentation of cases and discussion
- 12.30-13.15 Lunch
- 13.15-14.45 Part II, presentation of cases and discussion
- 14.45-15.00 Coffee
- 15.00-17.15 Part III, presentation of cases and discussion

### Saturday 27th October 2018

- 09.00-10.30 Part IV, presentation of cases and discussion
- 10.30-10.45 Coffee
- 10.45-12.00 Part V, presentation of cases and discussion
- 12.00-13.00 Part VI, presentation of cases and discussion
- 13.00-13.10 Summary and lunch-bag to go

## **Course description:**

In the current age of precise molecular diagnoses, targeted therapy, and rapid pace of discovery, it has become even more critical that all diagnostic pathologists be up to date. Not only does one have to know the new advances, but one has to keep in mind that correct diagnoses are first and foremost based on H&E in the appropriate clinical context. In this era of sub-specialization, one still needs broad general knowledge in order to consider the appropriate differential diagnoses, think outside the box and select the correct immunohistochemical and molecular workup. Beyond that, pathologists have to be vigilant regarding possibility of errors, which can occur at any time in the pre-analytic, analytic and post-analytic phases.

24 cases have been selected from various fields in Surgical Pathology to illustrate errors/pitfalls, diagnostic challenges, recently described entities and syndromic associations. These include breast, gynecologic, soft tissue, GI, and melanocytic lesions.

Virtual slides will be available for review by participants prior to the course (more information will follow on the DPAS website). Diagnoses and references will be provided at the conclusion.

Objectives:

1. Provide strategies for identification of possible sources of error in surgical pathology
2. Formulate appropriate differential diagnosis in diagnostically challenging cases
3. Learn efficient utilization of ancillary techniques based on differential diagnosis
4. Think “outside the box” - consider syndromic association in some cases