

RESEARCH SEMINAR

NOVEMBER 3, 2022

TIME: 14.00 - 19.00

PLACE: AUDITORIUM 2, RH

Department of Pathology, Rigshospitalet

PROGRAM

14.00 - 19.00

SCIENTIFIC PROGRAM

14.00 - 15.21 - CHAIR: Bjarne Winter Kristensen and Trine Grantzau

14.00 - 14.02

Welcome

BJARNE WINTHER KRISTENSEN

14.02 - 14.45

Artificial intelligence-based 20+ marker BLEACH&STAIN multiplex fluorescence immunohistochemistry framework facilitates large translational studies.

DR. MED. NICLAS C. BLESSIN

Institute of Pathology, University Medical Center Hamburg-Eppendorf

14.45 - 14.57

Biomedical laboratory scientist students – much more than just another student.

CAMILLA C. QVIST

14.57 - 15.09

Early & sensitive detection of Parkinson's/Lewy body dementia using RT-QulC

REMARH BSOU

15.09 - 15.21

Molecular characteristics of progression patterns towards pancreatic ductal adenocarcinoma

CHARLOTTE RIFT

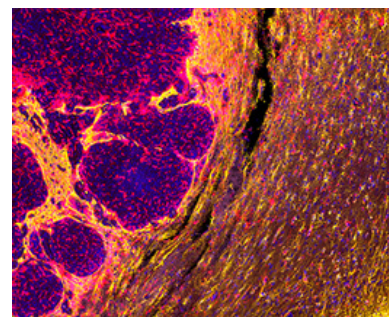
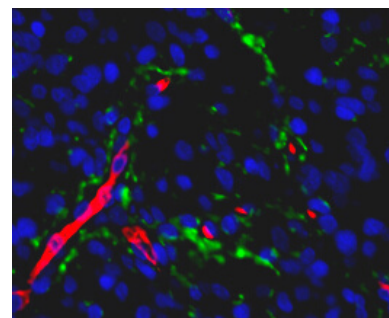
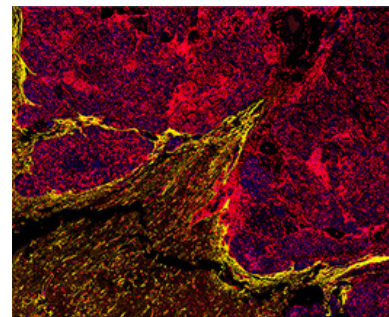
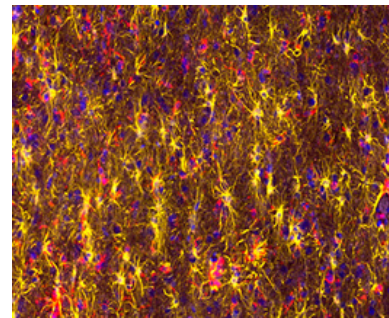
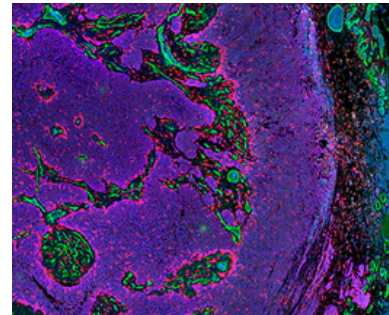
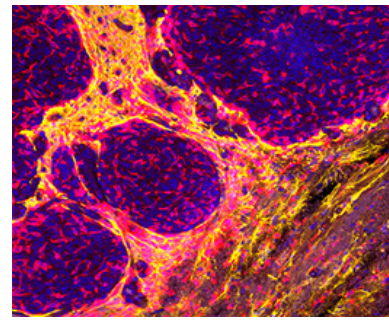
15.21 - 15.45 - BREAK

15.45 - 16.30 - CHAIR: David Scheie and Marie Bønnelycke

15.45 - 16.30

Intraoperative molecular diagnostics in brain tumor surgery

EINER VIK-MO



PROGRAM

14.00 - 19.00

SCIENTIFIC PROGRAM

16.30 - 16.54 - CHAIR: Marie Bønnelycke and to be announced later

16.30-16.42

Differentialdiagnostisk anvendelse af FISH-CDKN2A i bifasiske mammalæsioner

CHARLOTTE WICHMAND

16.42 - 16.54

Involvement of islet macrophages in type 1 diabetes

KRISTINA PEDERSEN

16.54-17.05 - BREAK

17.05 - 17.41 - CHAIR: Ausrine Areskeviciute and Eva Løbner Lund

17.05 - 17.17

Using digital learning environment as formative assessment tool in clinical education

FILIS NECIP

17.17-17.29

Identifying mechanisms of resistance to TKIs in patients with EGFR-mutated lung cancer

ERIC SANTONI-RUGIU

17.29- 17.41

Spatial RNA profiling of the tumor core, infiltration zone and periphery in glioblastoma

VILDE PEDERSEN

17.41- 19.00 - BUFFET AND POSTERVIEWING

